

---

★ VRB GROUP OF COMPANIES ★

 **BUILDING RELATIONS** 

---

Presents



RERA NO. RAJ/P/2024/2966

SHRI BALAJI NAGAR

Shri Balaji Nagar

KOTA



# About

Nestled in the heart of Kota, Rajasthan, our township stands as a tranquil oasis amidst lush greenery. Surrounded by the beauty of nature, it offers a peaceful environment that embraces serenity. Experience the perfect blend of modern living and natural harmony in our picturesque haven in Kota.





# Connectivity

- Railway Junction, Kota (Approx 13 km.)
- RTDC Bus Stand (Approx 13 km.)
- Vedanta Engg. College (Approx 8 km.)
- Proposed Airport (Approx 7 km.)
- Gurudwara Nearby (Approx 500 mtr.)
- Gurunanak Public School (Approx 100 mtr.)
- MBS Govt. Hospital (Approx 6.6 km.)
- Police Chowki Badgaon (Approx 1.5 km.)
- Bank of India Bank (Approx 2 km.)
- Oxygen Park (Approx 14 km.)
- Chambal River Front (Approx 7.5 km.)





PROPOSED LAY OUT PLAN OF  
**SHRI BALAJI NAGAR**



**MARKETING MAP**



# Entry Gate

Shri Balaji Nagar in Kota features a striking entry gate, serving as a symbolic and aesthetic focal point for the township, embodying the spirit of the community.







# Community Hall

A community hall,  
providing residents with a  
versatile space for  
gatherings, events, and  
social activities.



# Overhead Storage Reservoir

ensures a constant and efficient water supply to meet the needs of the community, contributing to the overall well-being of the residents.







# Yoga Zone

Surrounded by lush greenery and designed for serenity, this area encourages physical well-being and mental rejuvenation, fostering a holistic approach to health within the township.



# Solar Panels for Common Facilities

The integration of solar panels not only aligns with eco-friendly principles but also contributes to the long-term sustainability of the community.







# Informal Commercial Zone

This dynamic space not only enhances the overall liveliness of Shri Balaji Nagar but also provides economic opportunities for local entrepreneurs, fostering a sense of community and self-sufficiency.



# Kids Play Area

The play area features age - appropriate equipment, colorful surroundings, and secure boundaries, ensuring a joyful and secure environment for young residents.







# Open Gym

The inclusion of an Open Gym underscores Shri Balaji Nagar's commitment to well-being, providing a convenient and accessible space for residents to pursue their fitness goals within the community.



# Interlocking Tiles Road

Presentations are communication tools that can be used as demonstrations, lectures, speeches, reports, and more. It is mostly presented before an audience.







# Plot Demarcation

Presentations are communication tools that can be used as demonstrations, lectures, speeches, reports, and more. It is mostly presented before an audience.



# Selfie Point

Presentations are communication tools that can be used as demonstrations, lectures, speeches, reports, and more. It is mostly presented before an audience.







# Sitting Area

This feature not only enhances the aesthetics of Shri Balaji Nagar but also fosters a sense of community by providing residents with pleasant spaces to connect and enjoy the outdoor environment.

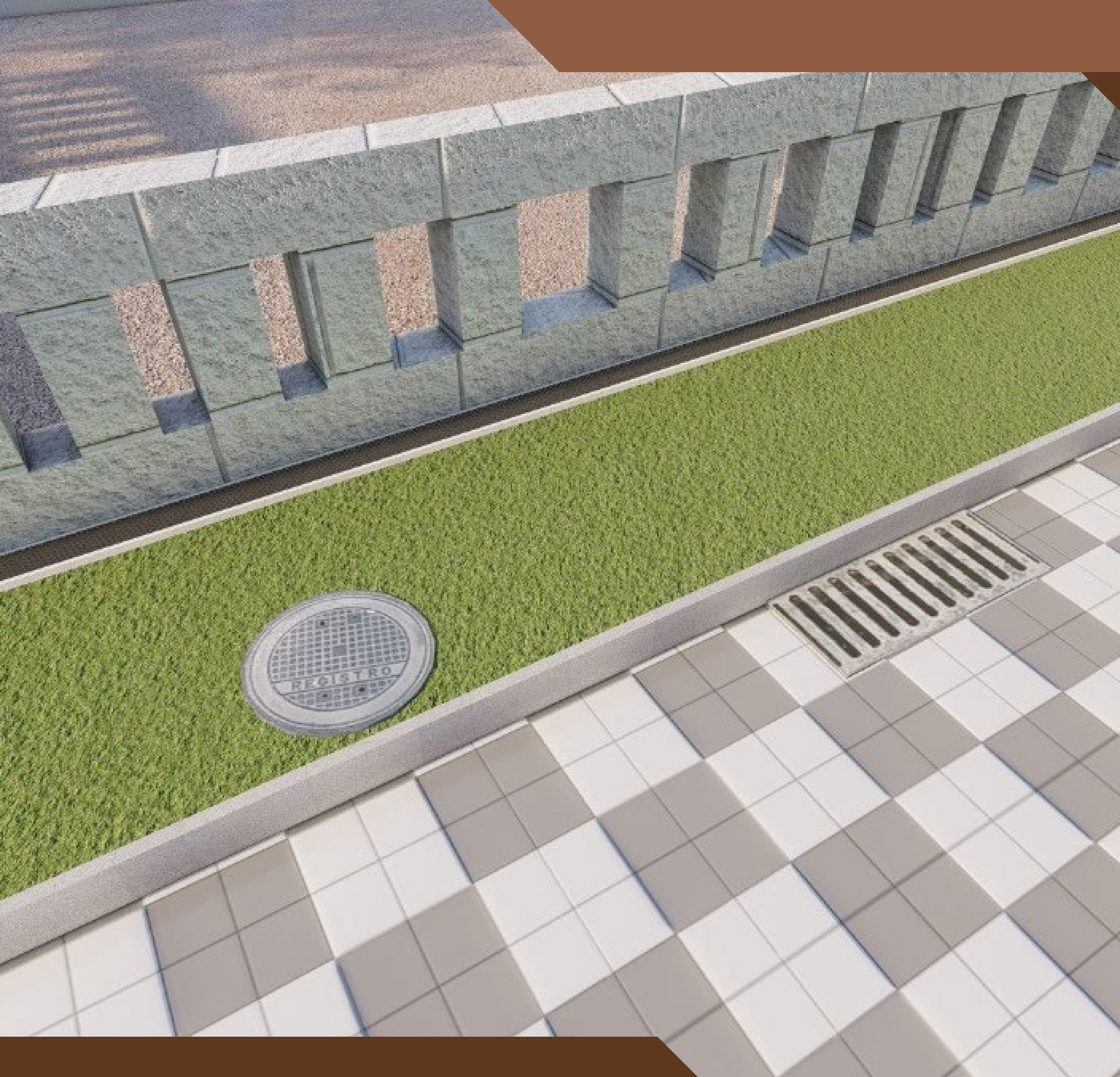




# Block Demarcation

This deliberate planning adds to the sense of organization and cohesiveness, ensuring that residents can easily identify and locate specific blocks within the township.





# Underground Sewage Line

The underground sewage line  
reflects the community's  
commitment to cleanliness,  
hygiene, and a well-maintained  
living environment.





# Boundary Wall

A protective embrace, our  
boundary wall ensures security  
and privacy for your tranquil  
haven in Kota, Rajasthan.





Thank You